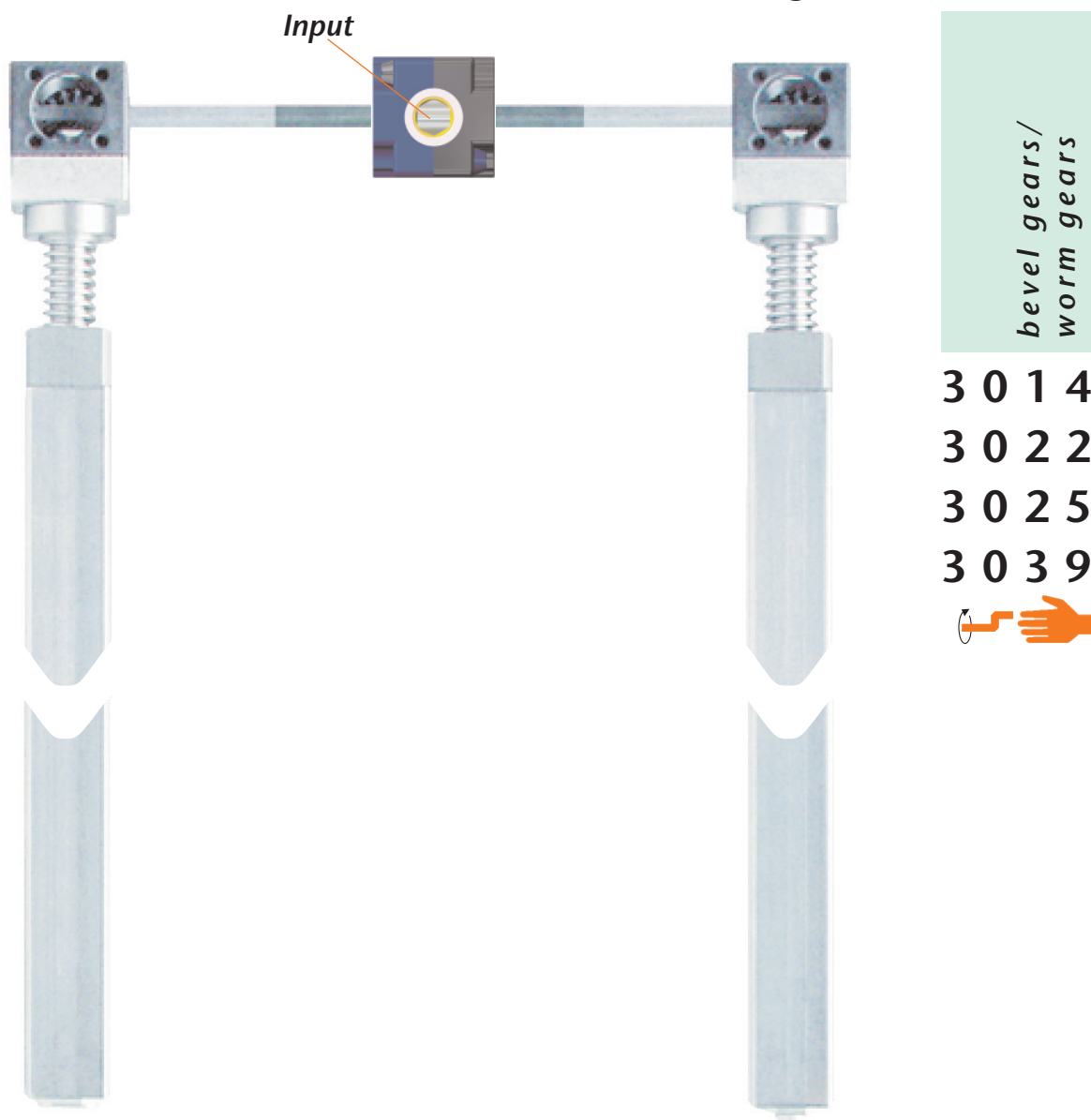


## Deflection gear unit



### Description:

Deflection gear unit, predominantly adapted for manual sit/sit work stations.

### Special features:

- Ratio 1 : 1
- Housing made of reinforced glass-fibre
- Hardened steel gear cogs
- Max. torque 3 Nm

### Customer specific:

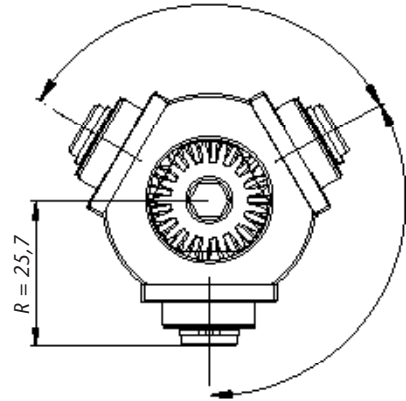
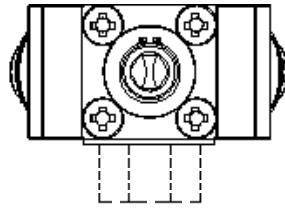
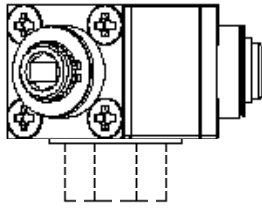
Because of its modular design it is possible to meet special customer requirements even for small quantities.

### Caution:

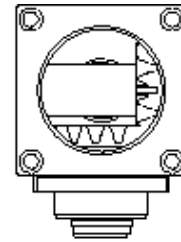
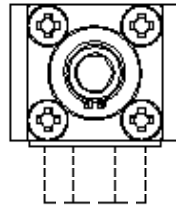
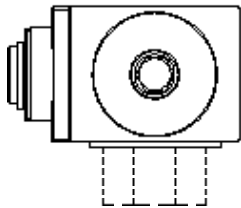
Please take into account that depending on the spindle pitch, the system could back-drive.

# Deflection gear unit 3014/3022/3025/3039

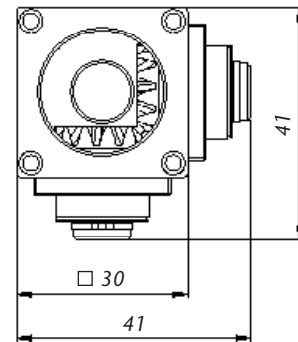
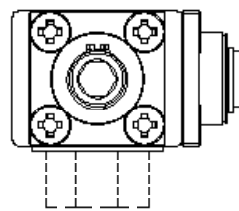
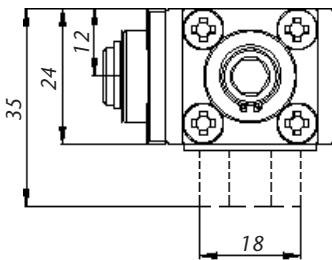
## 3014



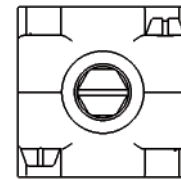
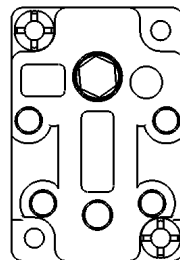
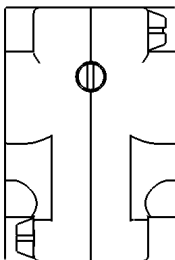
## 3022



## 3025



## 3039



## Technical Data

Model	3014	3022	3025	3039
Ratio	1 : 1	1 : 1	1 : 1	1 : 1
Input in mm	hex 6	hex 6	hex 6	hex 6
Housing	Aluminium	reinforced synthetic material	reinforced synthetic material	reinforced synthetic material
Max. input torque in Nm	3	3	3	4