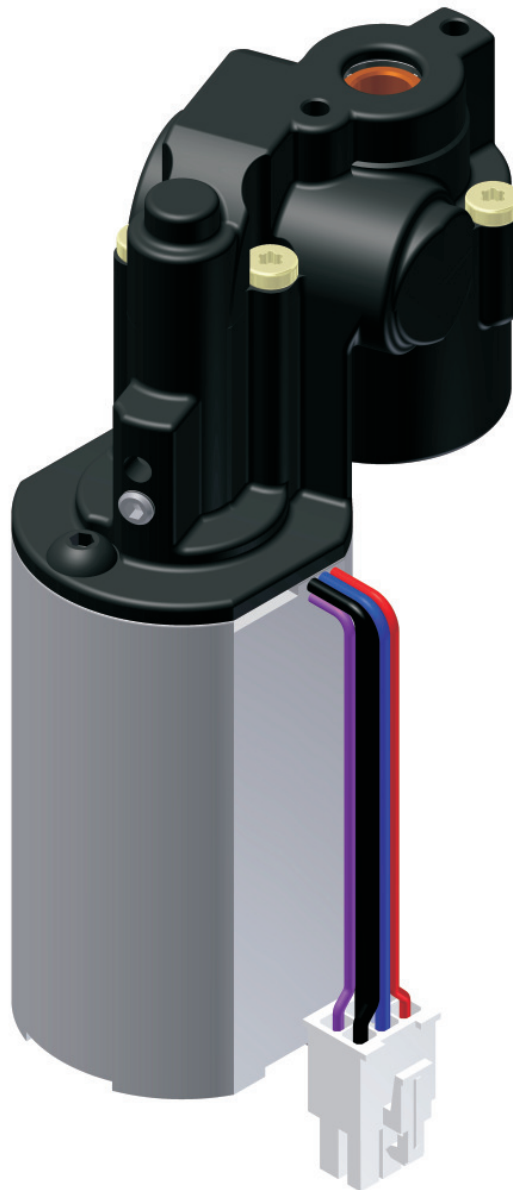


Motor drive



3 1 2 1



Description:

Motor drive with through-going hexagon socket.

Special features:

Integrated position measuring system. Simple Upgrade from manual to motorized solution.

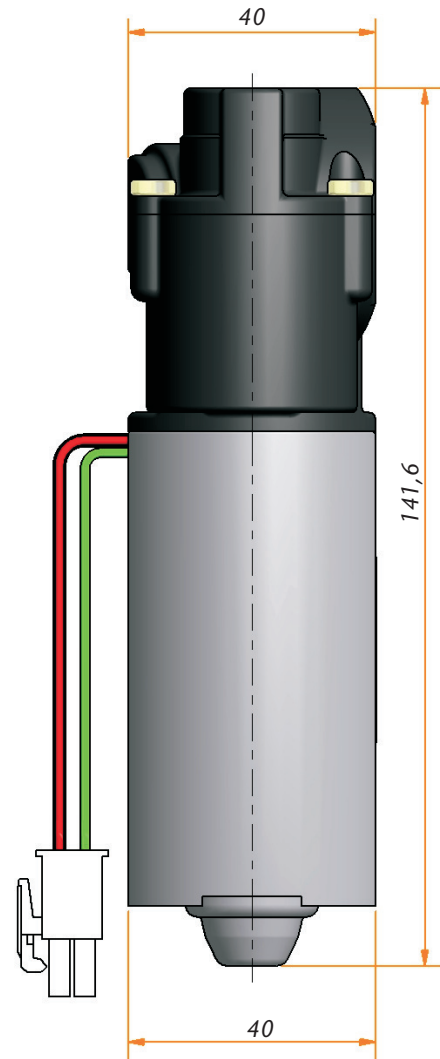
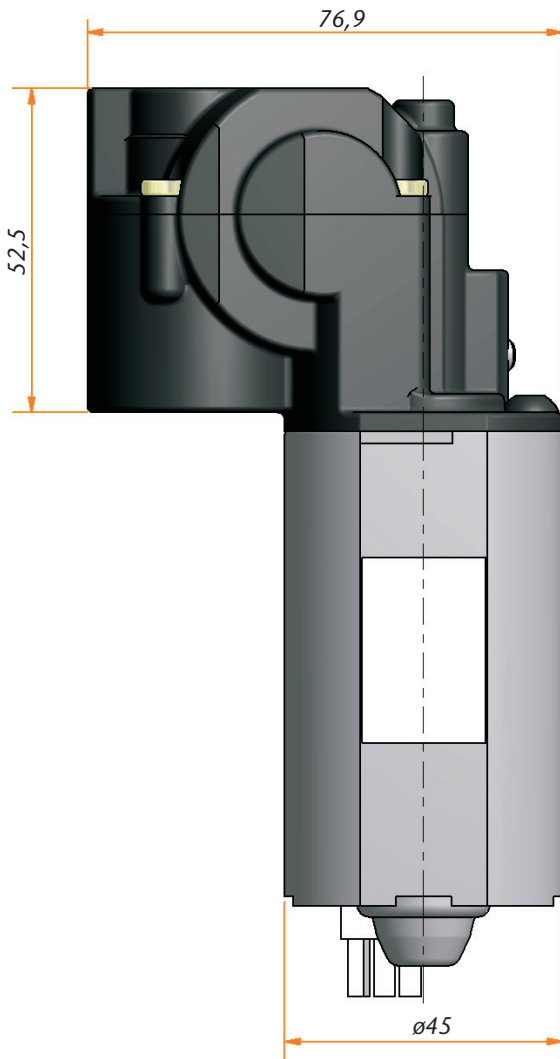
Customer specific:

Compact motor drive for customer specific applications. Motor drive is parallel to the connecting rod.

Safety information:

See technical data sheet.

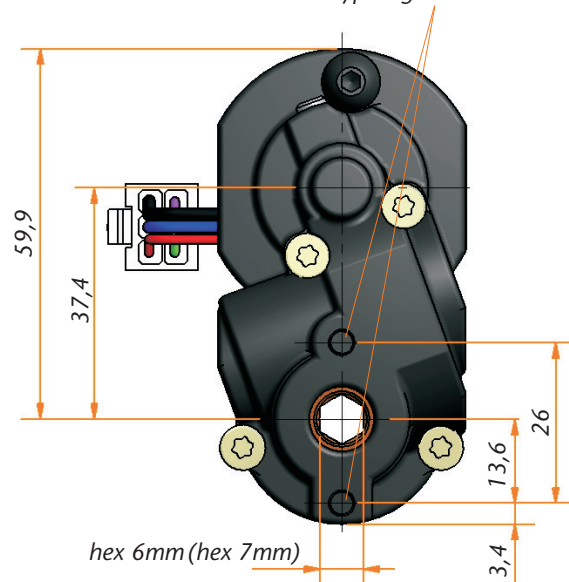
Motor drive 3121



Technical Data

Model	3121
Motor	DC Motor 24 V
Sensor-feed	Hall/5 V DC/0,3A
Type of protection	IP30
Duty cycle	20% (at 5 min.)
Idle running speed	150 rpm. (24V) 150 rpm. *
Input	inside hex 6/hex 7 mm
Max. input torque	3 Nm

Fastening bores for self-tapping screw tightening torque 1,8 Nm screw type e.g. WN1452x XX



* in combination with LogicData control Logic-S/Compact-3