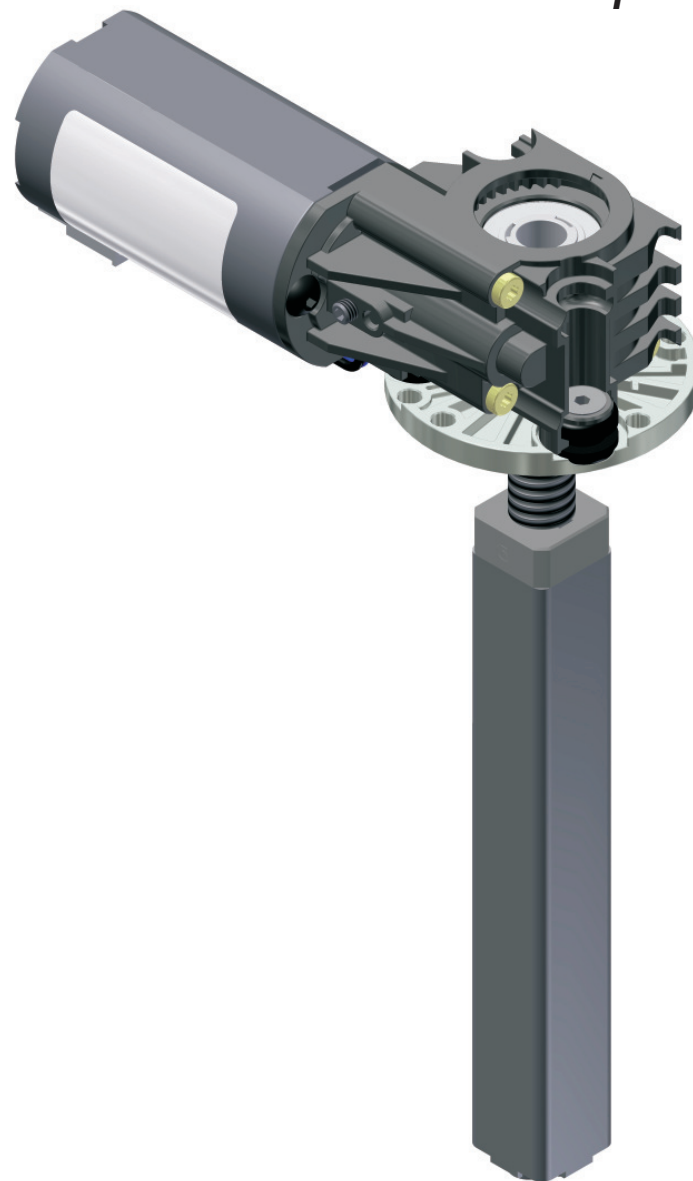


## Electric spindle drive



stepless  
height adjustment

3 1 3 1



### Description:

Motorized solution for the individual sit-stand workplace. Stepless height adjustment to customer specific stroke.

### Special features:

Simple mounting, integrated position measuring system, single telescopic function. The actuator is completely damped against vibration and noise by an elastic coupling as well as by several absorbers.

### Customer specific:

As a result of the modular design it is possible to meet special customer requirements even even for small quantities.

The actuator can be supplied with various spindle lengths and different spindle pitches.

### Safety information:

Please take into account that depending on the spindle pitch, the system could back drive.

