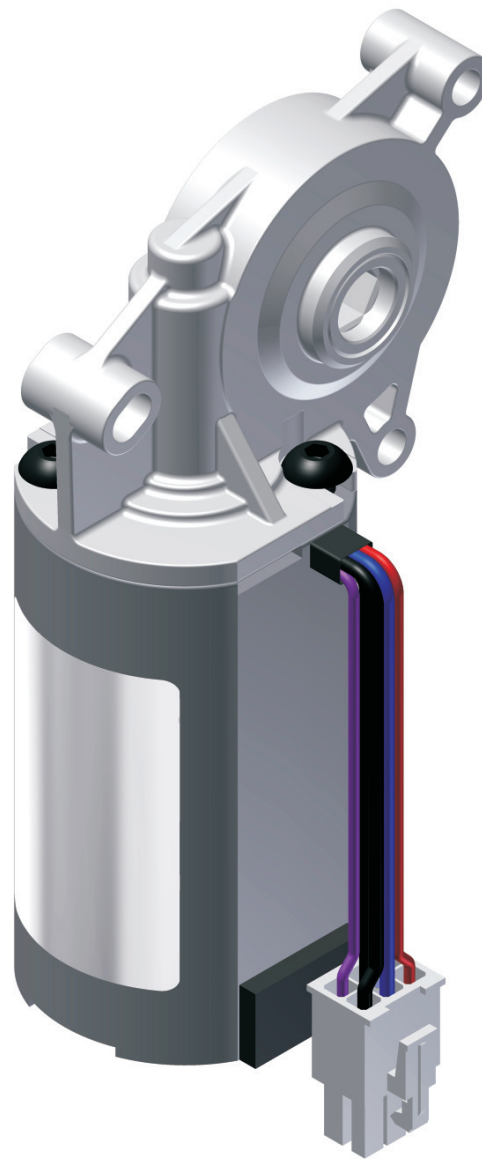


Motor drive



Motor drive

KTTB
3133



Description:

Motor drive with through-going hexagon socket.
24V-DC motor with worm gear.

Special features:

Motor with integrated position measuring system
Simple mounting. Applicable with all Ketterer
spindle systems.

- very powerfull.

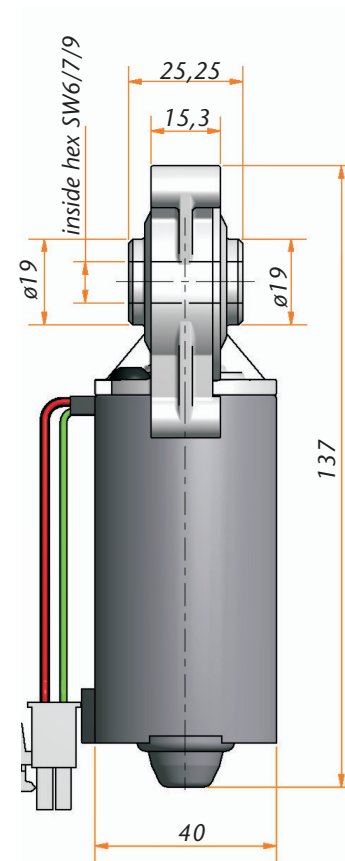
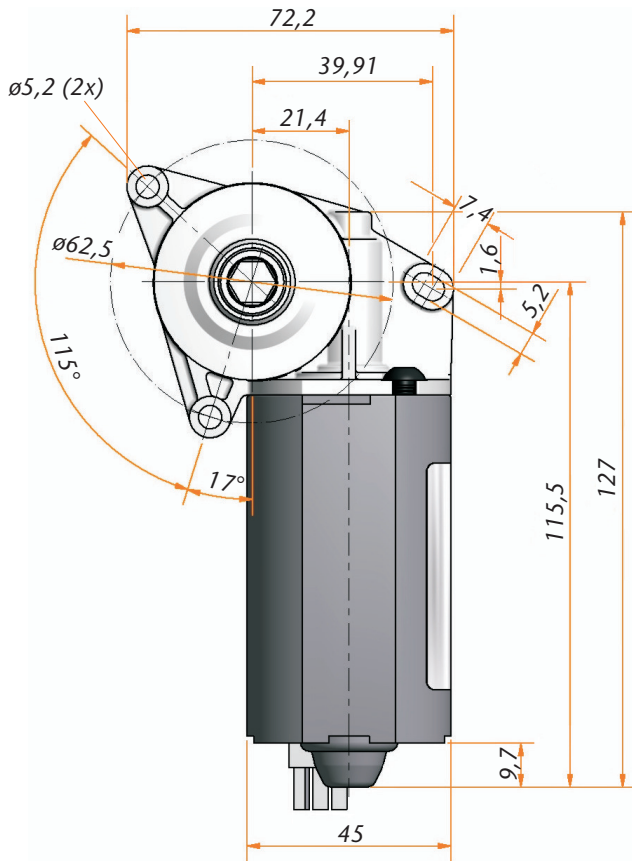
Customer specific:

Compact motor drive for customer specific
applications. Simply adaptable by hexagon socket
and three separate fastening bores.

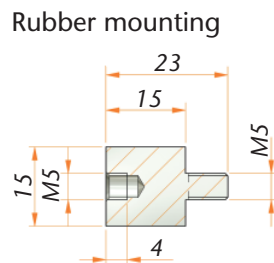
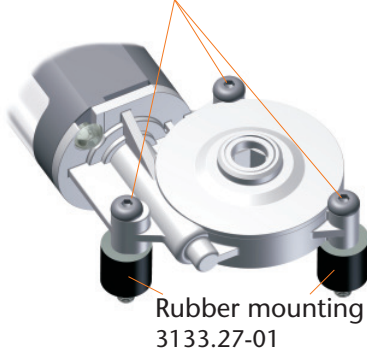
Caution:

See technical data sheet.

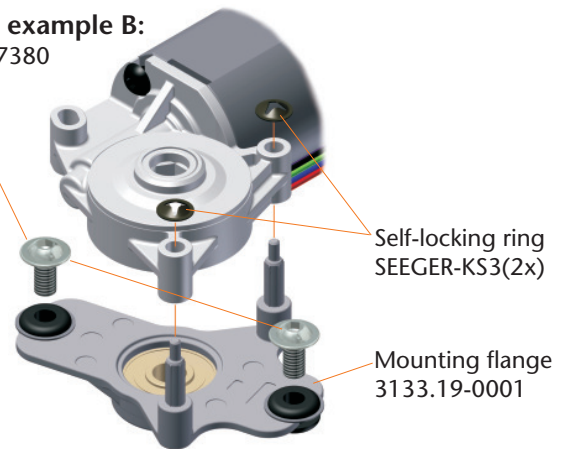
Motor drive KTTB 3133



Mounting example A:
Screw DIN 7318 M5x18 (3x)



Mounting example B:
Screw DIN 7380
M6x12 (2x)



Technical Data

| Model | KTTB 3133.00-0001 | KTTB 3133.00-0002 | KTTB 3133.00-0003 |
|--------------------|------------------------------|------------------------------|-------------------------------|
| Motor | DC Motor 24 V | DC Motor 24 V | DC Motor 24 V |
| Sensor/feed in | Hall/5 V DC/0,3A | Hall/5 V DC/0,3A | Hall/5 V DC/0,3A |
| Type of protection | IP30 | IP30 | IP30 |
| Duty cycle | 20% (at 5 min.) | 20% (at 5 min.) | 20% (at 5 min.) |
| Idle running speed | 100 rpm (24 V) 120 rpm. * | 100 rpm (24 V) 120 rpm. * | 100 rpm. (24 V) 120 rpm. * |
| Input | inside hex 9 mm | inside hex 6 mm | inside hex 7 mm |
| Max. input torque | 5 Nm | 5 Nm | 5 Nm |

* in combination with LogicData control box Compact-3