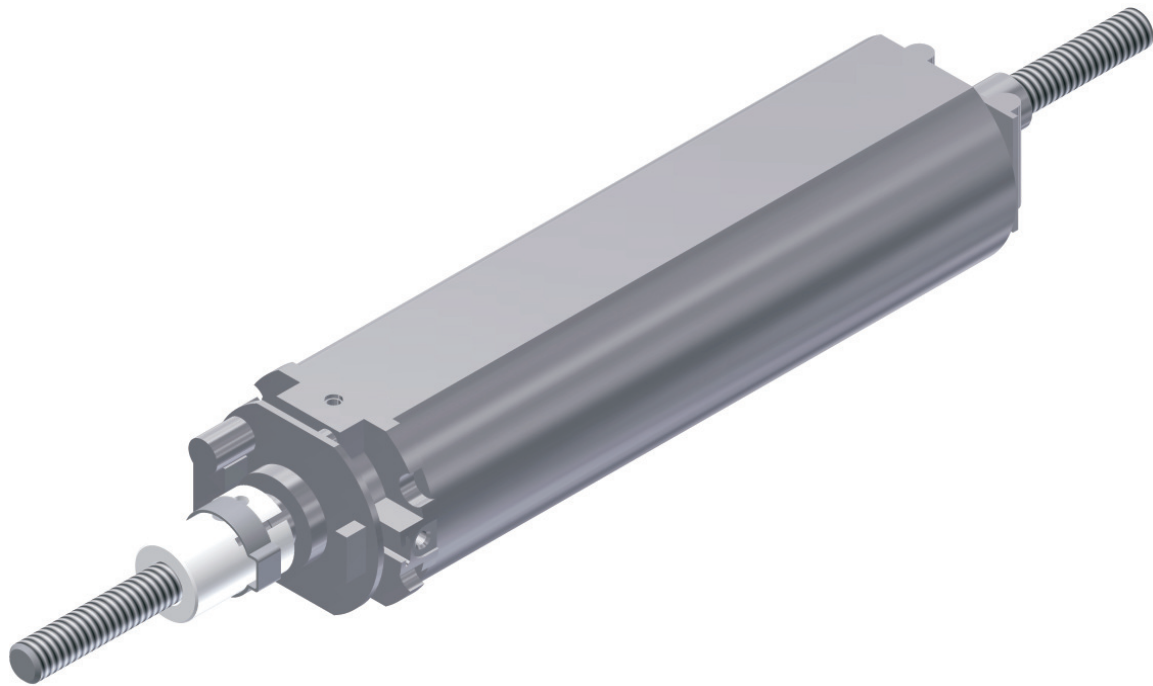


Hollow shaft motor



Motor drives

3 1 4 7



Description:

Motor driver with hollow shaft and spindle nut.

Special features:

Motor drive with integrated position measuring system. Through-going not rotating spindle for push and pull movements.

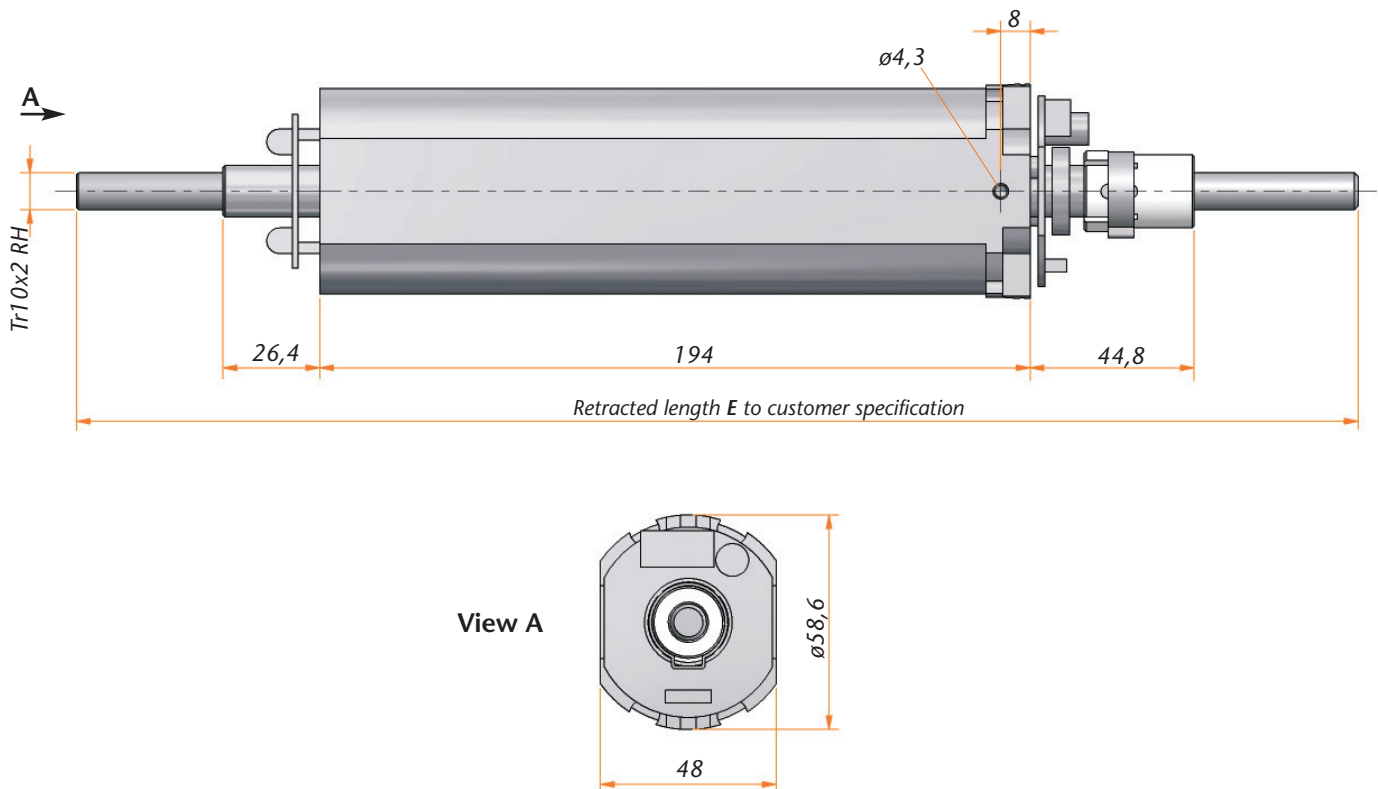
Customer specific:

Compact motor drive for customer specific applications.

Caution:

Please take into account that depending on the system could back-driver.

Hollow shaft motor 3147



System may not be used for table legs, see published patent application DE 10 2004 046 673 A1. (There is a claim.)

Technical Data

Model	3147
Motor	DC Motor 28 V
Sensor-feed in	Hall/5 V DC/0,3A
Duty cycle	20 % (at 5 min.)
Idle running speed	2700 rpm
Type of spindle	Tr10x2 RH
Max. lifting force	500 N
Speed of movement	47 mm/s