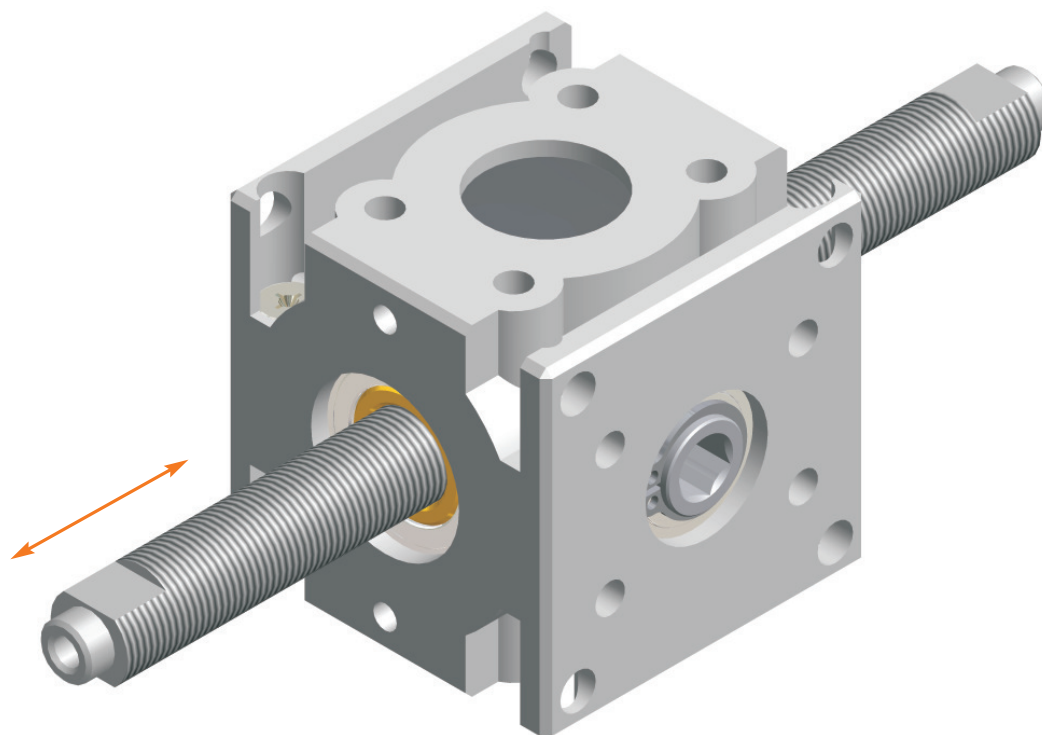


## Bevel gear



stepless  
height adjustment

3900  
3901



### Description:

Bevel gear with through-going not rotating spindle for push and pull movements.

Gear particularly suitable for machine construction and lifting systems for skylights, winter gardens and green houses.

### Special features:

The NWF-special gearing ensures a smooth running of the gear.

- Ratio 1,44 : 1 ; 1,5 : 1
- Housing made of die-cast zinc
- Case hardened, bearing seated steel cog wheels

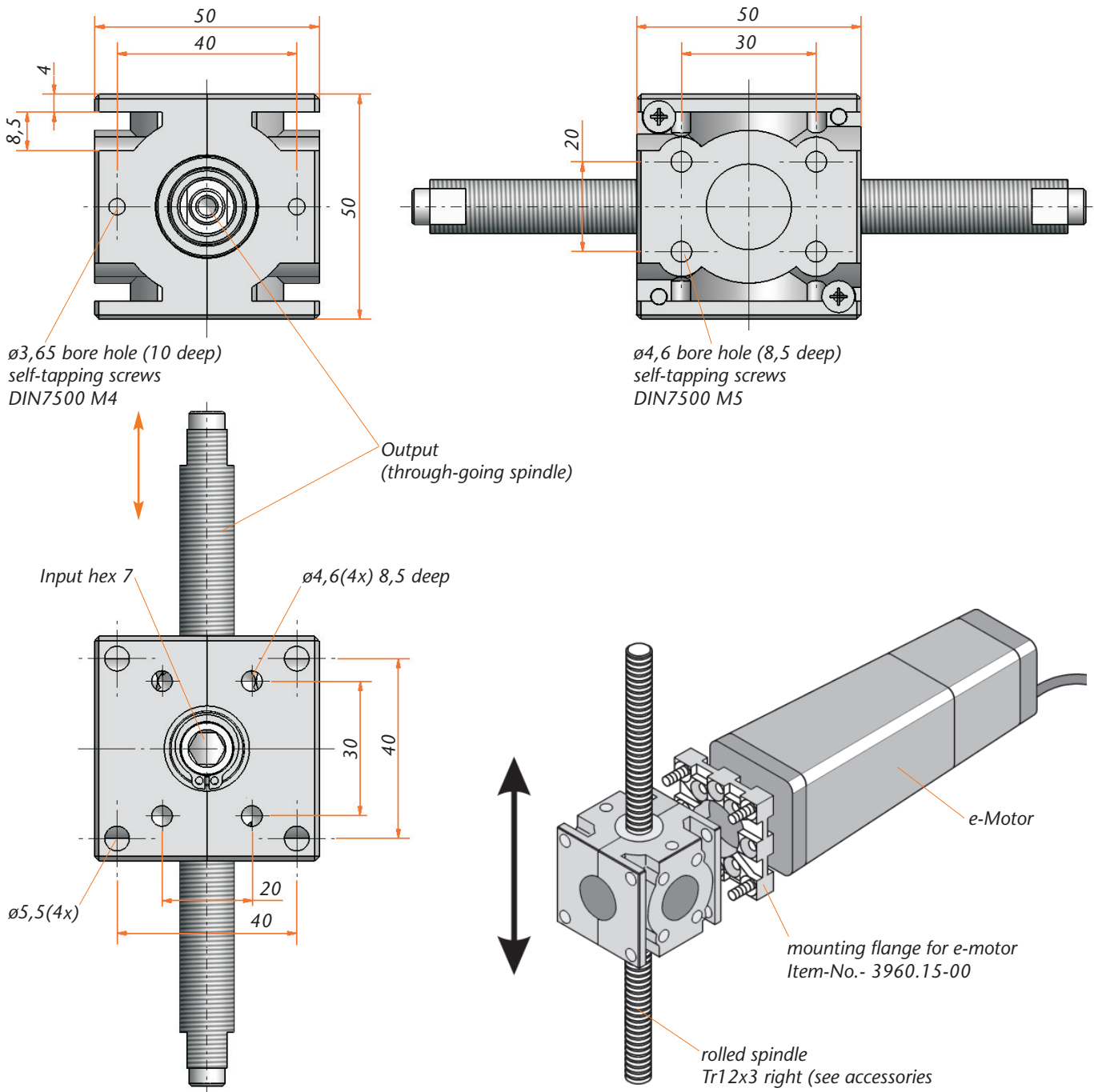
### Customerspecific:

The gear can be supplied in combination with various spindles.

### Caution:

Please take into account that depending on the spindle pitch, the system could back-drive.

# Bevel gear 3900/3901



## Technical Data

Model	3900	3901
Ratio	1,44 : 1	1,5 : 1
Input	hex 7 mm	hex 7 mm
Type of spindle	Tr12x3 RH	Tr12x3 RH
Max. lifting force	800 N	800 N