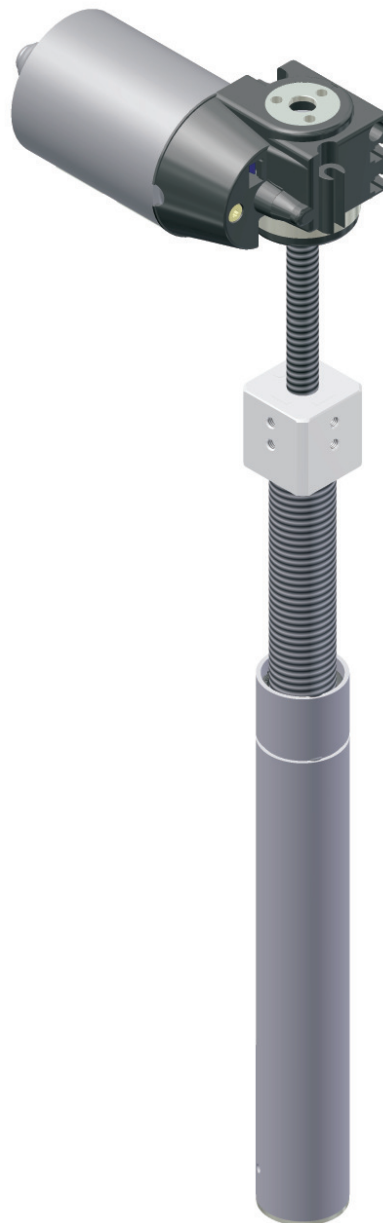


Electric synchronous telescopic drive



*stepless
height adjustment*

4 1 1 4



Description:

Electric motor solution for the individual sit-stand work station. Smooth running stepless height adjustment.

Special features:

Simple mounting, integrated position measuring system, twice telescopic. Electronic synchronisation with up to 24 actuators. Synchronous movement of the spindle units, double stroke speed.

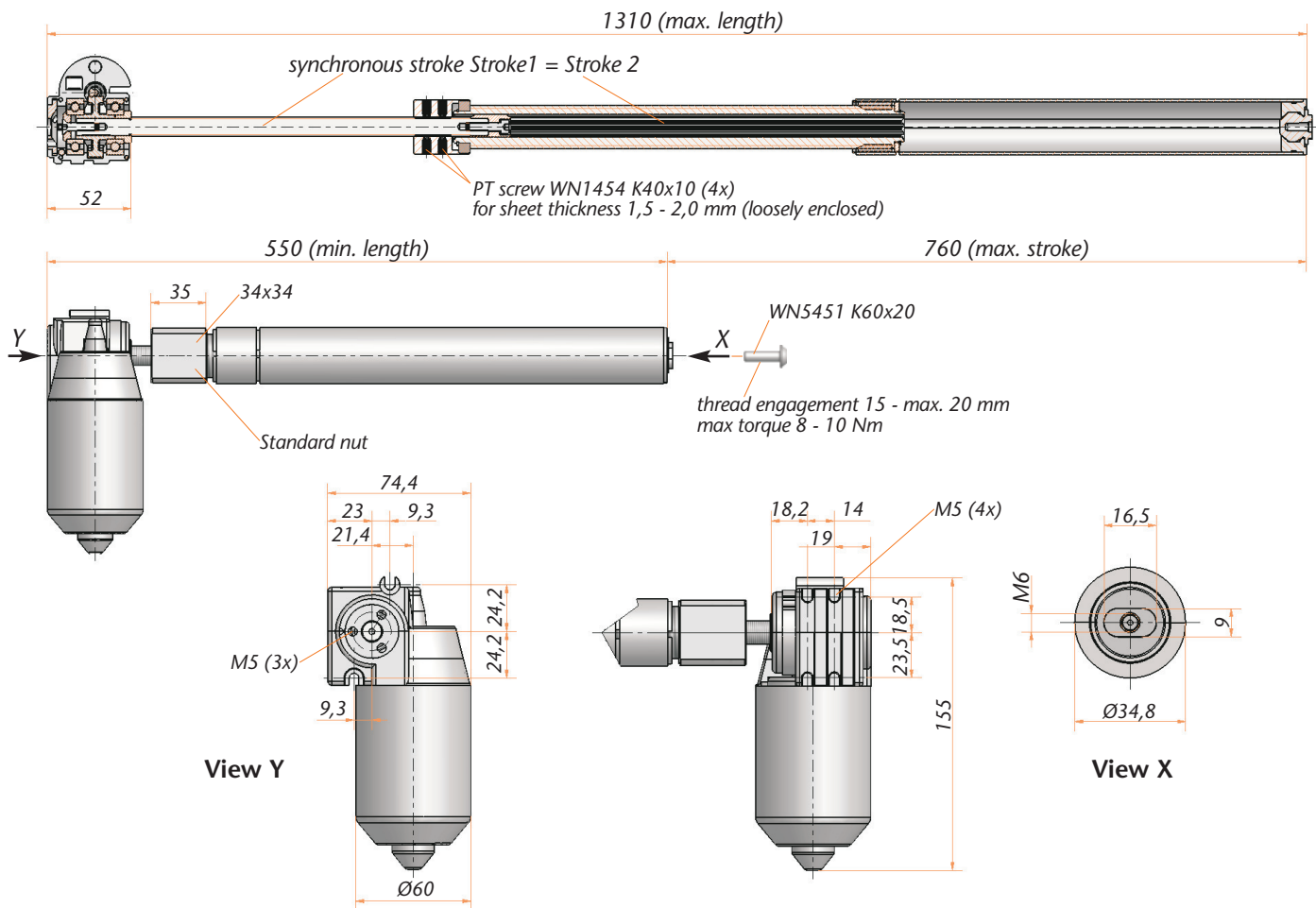
Customer specific:

Because of the modular design it is possible to meet special customer requirements even for small quantities.

Caution:

Please take into account that depending on the spindle pitch, the system could back-drive.

Electric synchronous telescopic drive 4114



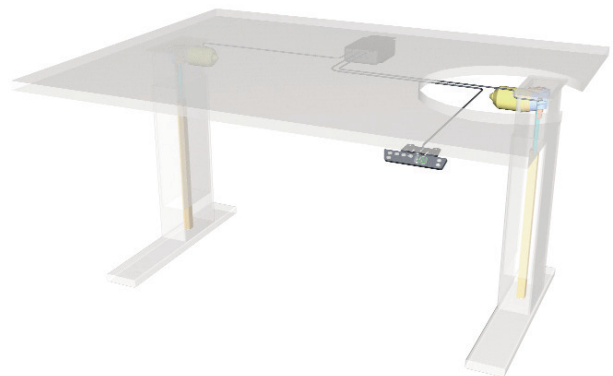
Technical Data

Model	4114
Motor	DC Motor 24 V
Sensor-feed in	Hall/5 V DC/0,3A
Type of protection	IP30
Duty cycle	20% (at 5 min.)
Idle running speed	100 rpm (24 V) 150 rpm *
Stroke max.	(retracted length -170 mm) x2
Typ of spindle	SG25x12P6 RH ** SG12x12P4 RH
Max. lifting force	800 N
Max. input torque	5 Nm
Speed of movement	50 mm/s *

** further type of spindles on request

* in combination with LogicData control Logic-S/Compact-3

Example of use



Control box and hand switch
see catalog page "accessories"