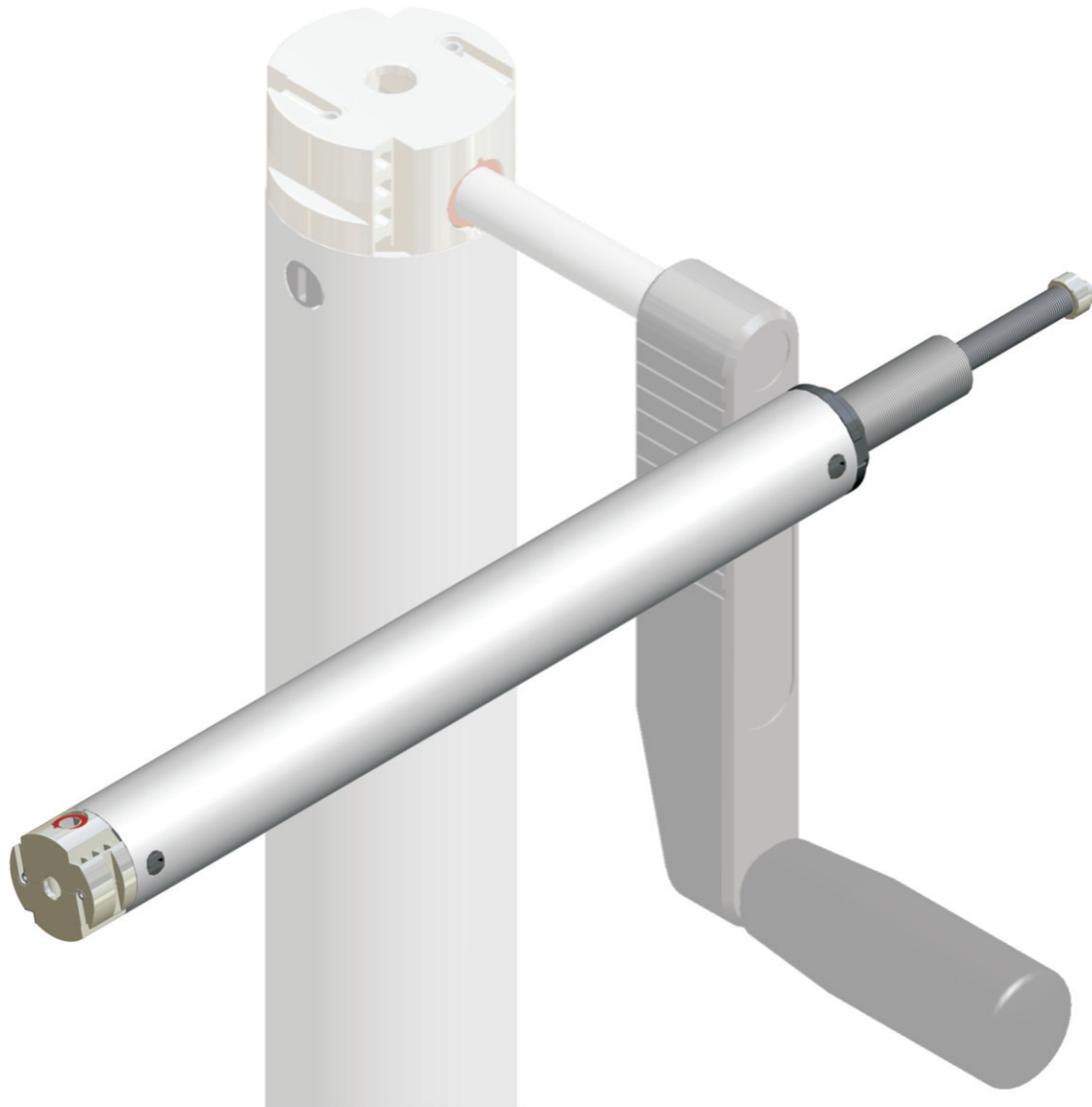


Fast crank adjustment



*stepless
height adjustment*

4 1 3 9



Description:

Cost-efficient solution for the individual sit/stand workstation. Smooth running stepless height adjustment with high crank speed.

Special features:

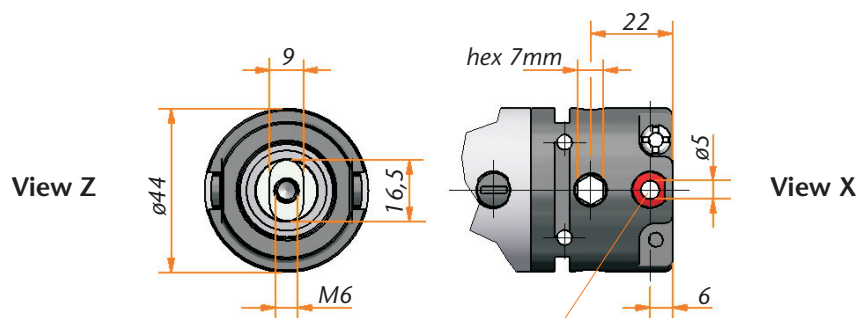
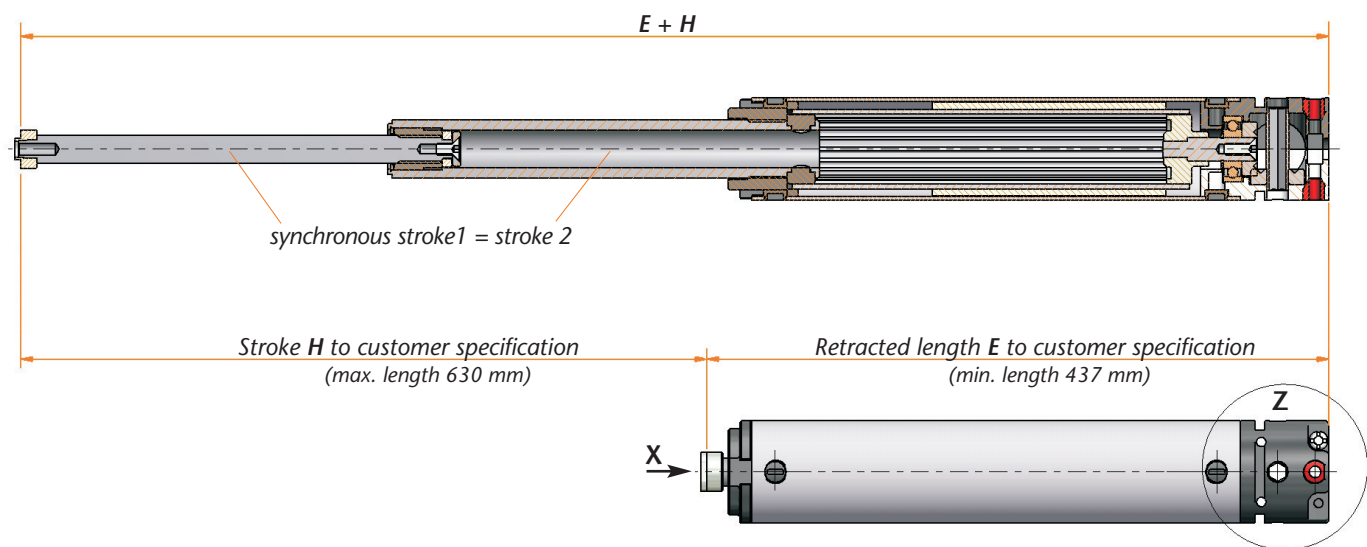
Small and compact design, simple mounting, Synchronous motion of the spindle elements, double stroke speed.

- Stroke per crank rotation 14 mm

Customer specific:

Because of the modular design it is possible to meet special customer requirements even for small quantities.

Fast crank adjustment 4139



bearing bush for fixing
by screws DIN 915-M6
mounting depth max. 8+0,5 mm

Technical Data

Model	4139.00-V01ExxxHxxx
Movement	14 mm/rev synchronous spindle movement
Ratio	1 : 1
Input	hex 7 mm
Type of spindle	SG12x7P3,5 LH SG25x7P3,5 RH
Stroke max.	(retracted length -110 mm) x2
Max. lifting force	800 N
Max. input torque	6 Nm