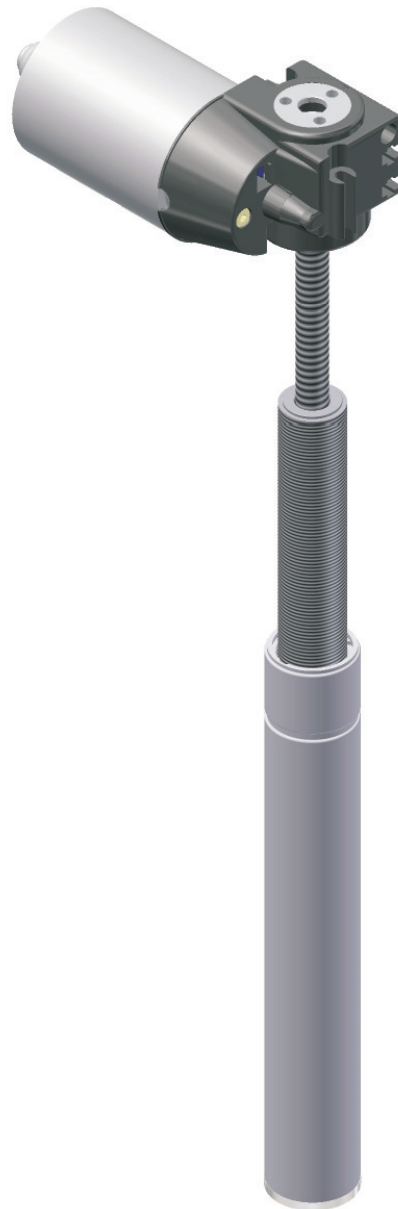


Electric telescopic spindle drive



*stepless
height adjustment*

4 6 3 0



Description:

Motorized solution for the individual sit/stand workstation. Smooth stepless height adjustment.

Special features:

Simple mounting, integrated distance of travel output. Dual telescopic function.

Customer specific:

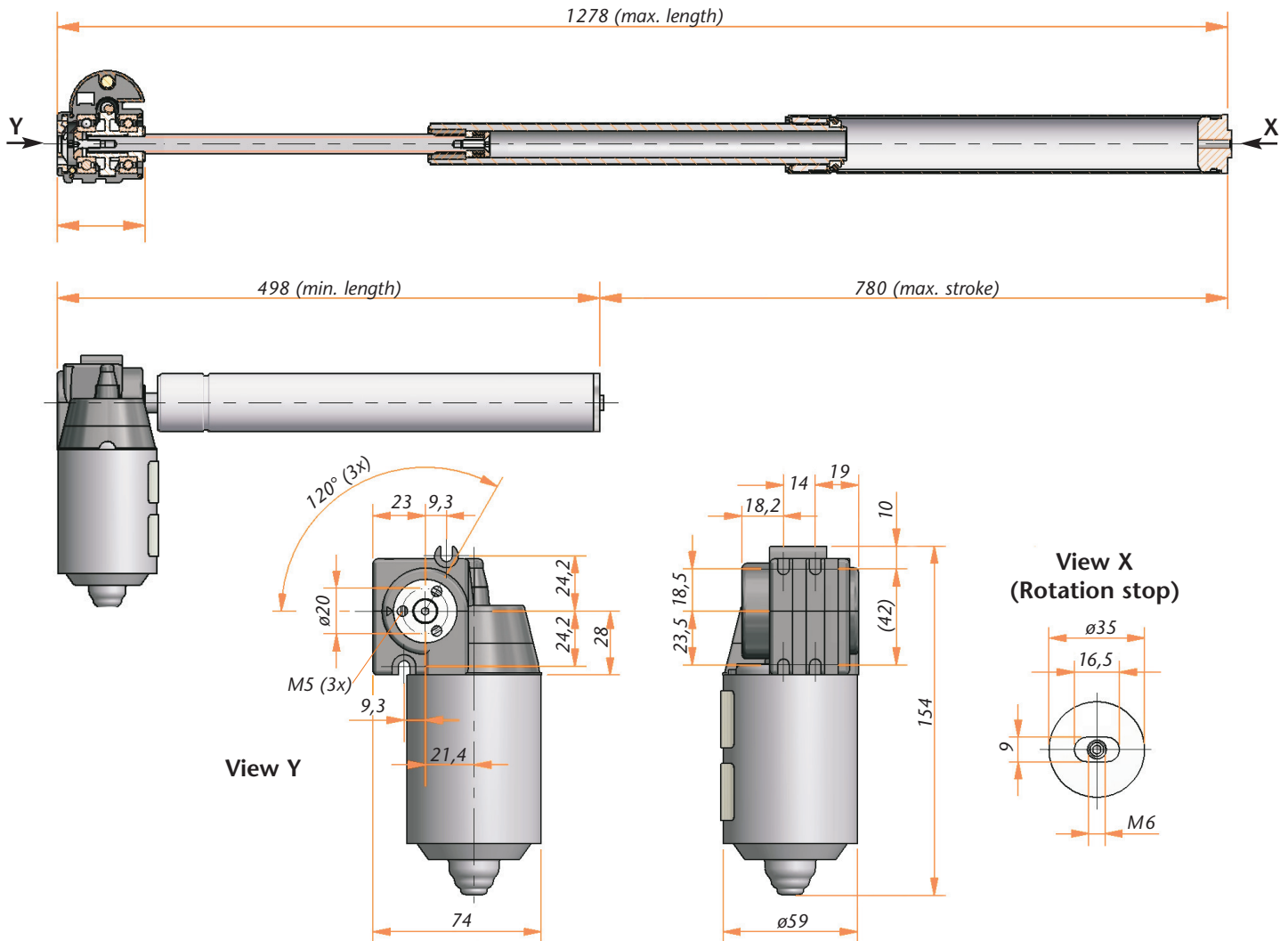
As a result of the drive's modular structure, special customer requirements can be met.

The actuator can be supplied with various spindle lengths and different spindle pitches.

Caution:

Please take into account that depending on the spindle pitch, the system could back-drive.

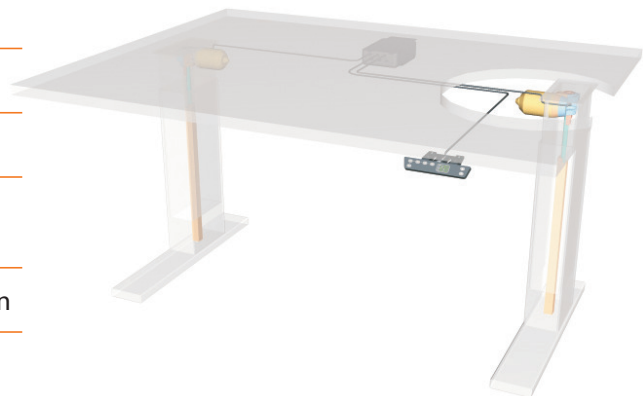
Electric telescopic spindle drive 4630



Technical Data

Model	4630
Motor	DC Motor 24 V
Sensor-feed in	Hall/5 V DC/0,3A
Type of protection	IP30
Duty cycle	20% (at 5 min.)
Idle running speed	100 rpm (24 V) 150 rpm *
Stroke max.	retracted height -108mm
Type of spindle	SG25x12P6 RH ** SG12x12P4 RH
Max. lifting force	800 N
Max. input torque	5 Nm
Speed of movement	25 mm/s *

Application example



For synchronous control and desk switches,
see separate control data sheet

** further type of spindles on request

* in combination with LogicData control Logic-S/Compact-3

4630.75-02/20100204