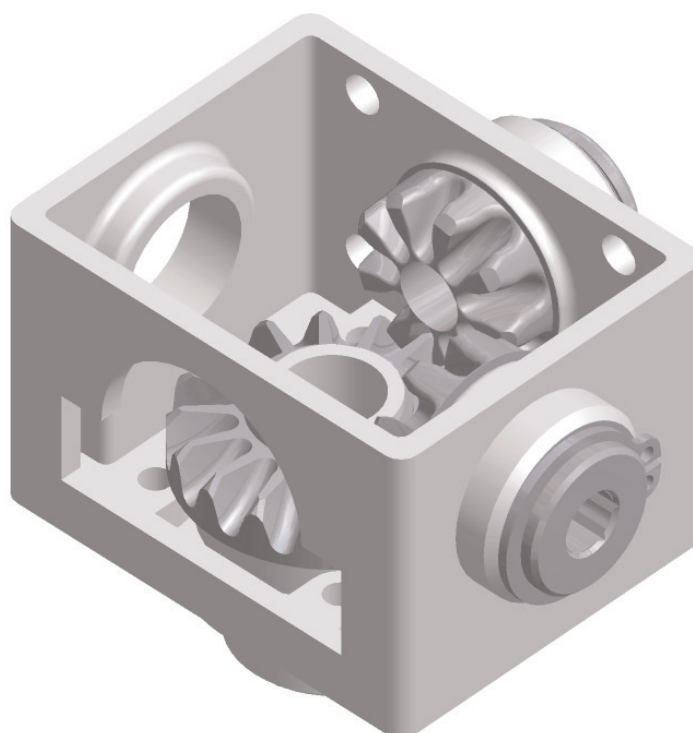


Bevel gear



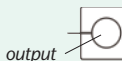
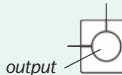
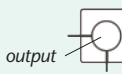
bevel gears/
worm gears

4 8 0 2
4 8 0 3
4 8 1 3



Number and position of the inputs

Output Versions:

one input	4802	
two inputs	4803	
two inputs	4813	

Description:

Gear for stepless height adjustment for sit-sit or sit-stand work stations.

Special features:

The output bearing can be loaded on pressure. The NWF-special gearing ensures a smooth running of the gear.

- Ratio 2 : 1
- Housing made of zinc die-casting
- Case hardened cog wheels

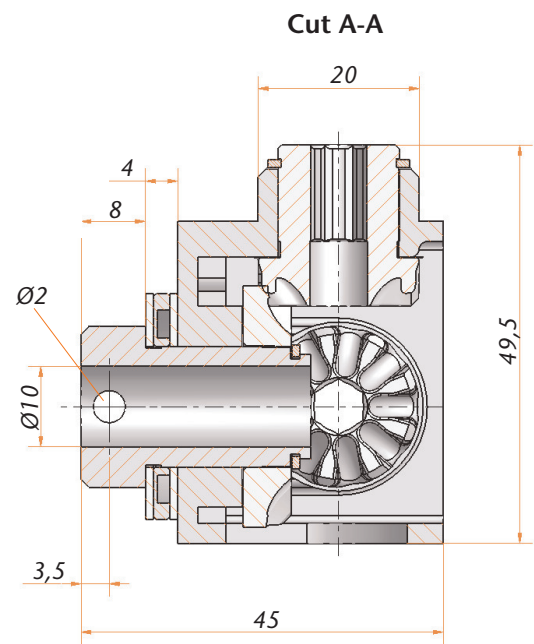
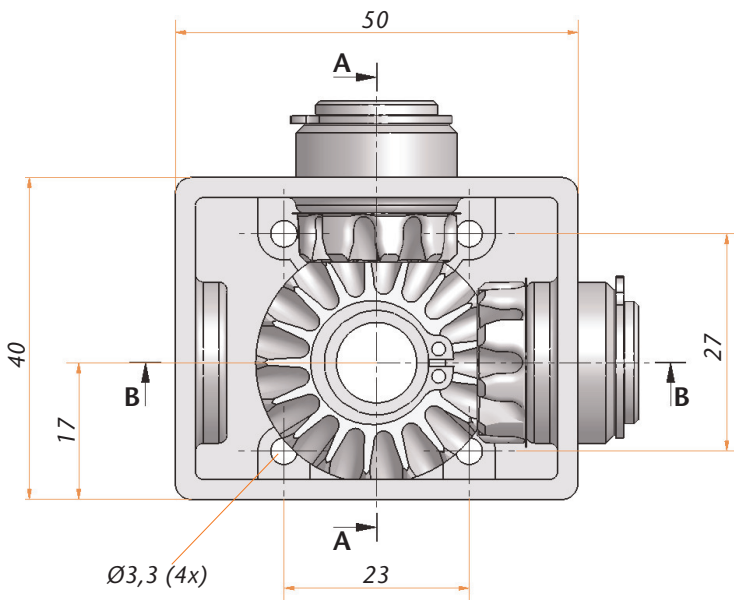
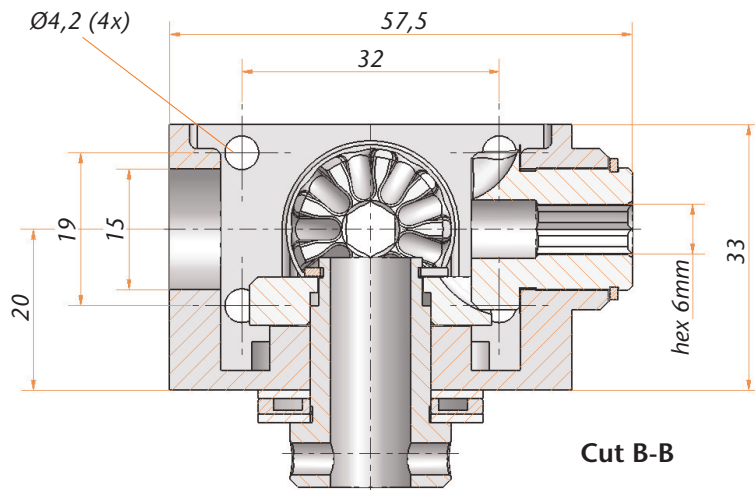
Customer specific:

The gear can be supplied in combination with various spindles. If you employ e-motors the bearing point of the bearings has to be equipped with glycodur bearings.

Caution:

Please take into account that depending on the spindle pitch, the system could back-drive.

Bevel gear 4802/4803/4813



Technical Data

Model	4802	4803	4813
Ratio	2 : 1	2 : 1	2 : 1
Input in mm	hex 6	hex 6	hex 6
Number of cog wheels	2	3	3
Max. lifting force in N	1200	1200	1200
Max. input torque in Nm	4	4	4