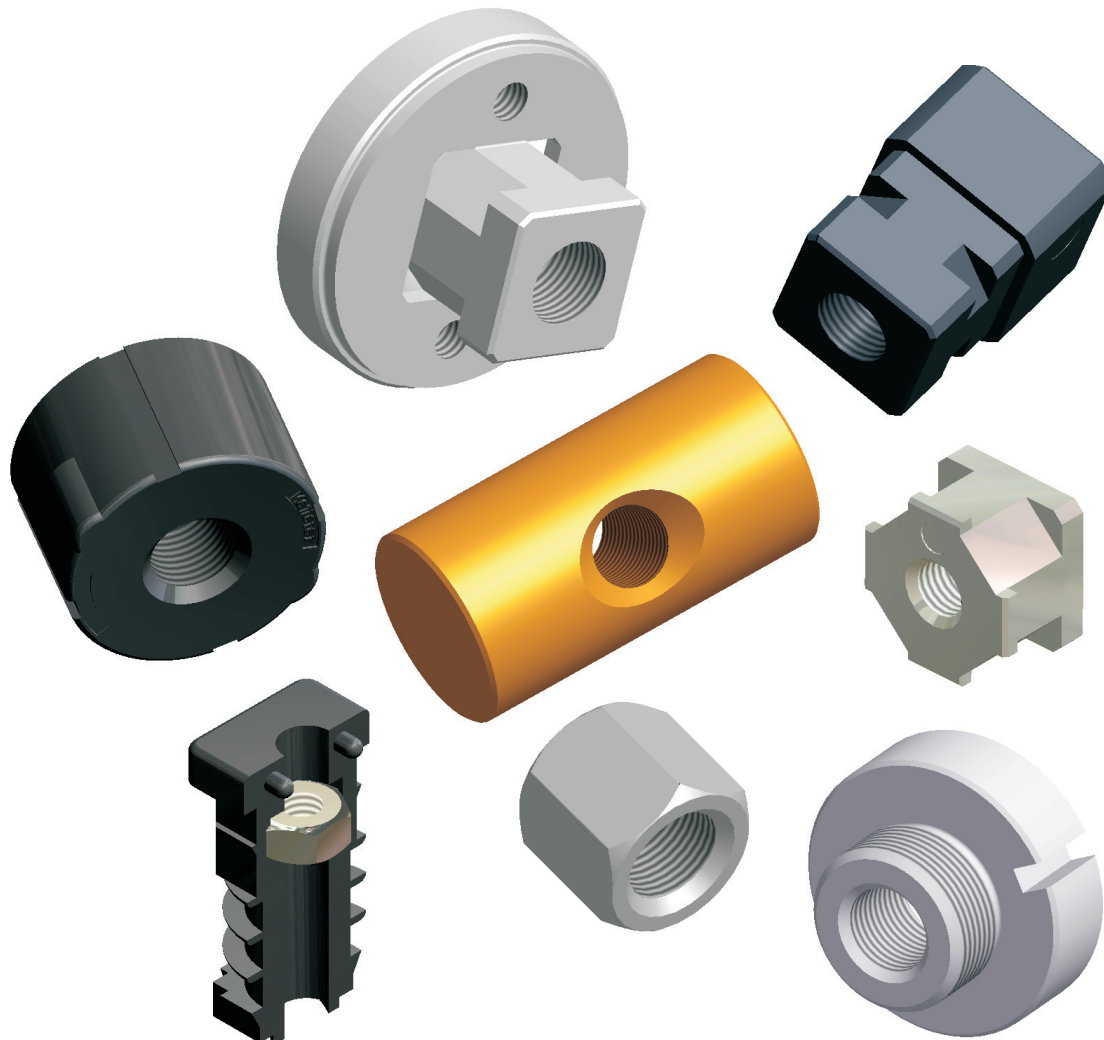


Spindle nuts

Metric
ISO-Trapezoid threads



Description:

Nuts by Ketterer:

- Trapezoid thread nuts
- Special thread nuts (customer specific nuts, steep thread nuts)
- Metric nuts

Made of the following materials:

- Free cutting steel
 - Aluminium
 - Brass
 - Naval brass
 - Synthetic material
- Further materials on request

Special features:

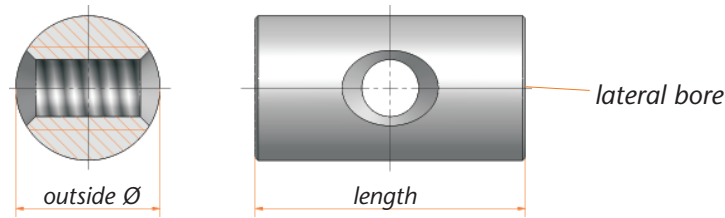
Flexible characteristics:

- Pitches: 1 - 80 mm per rotation
- number of starts: 1 - 12
- Rotating direction: left - right

Customer specific:

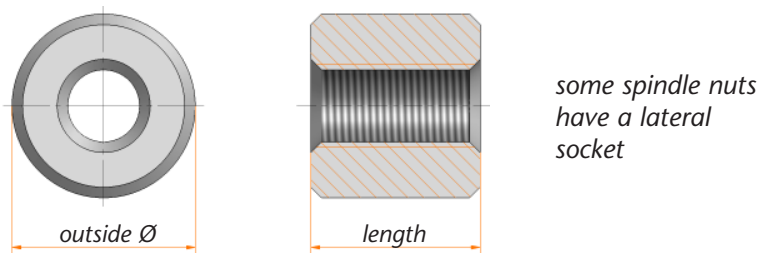
- End working:
We produce nuts according to your drawings and requirements.
- Spindle nuts:
Spindle nuts are available to our range of spindles.

Spindle nuts



(transverse) Metric ISO - trapezoid threads

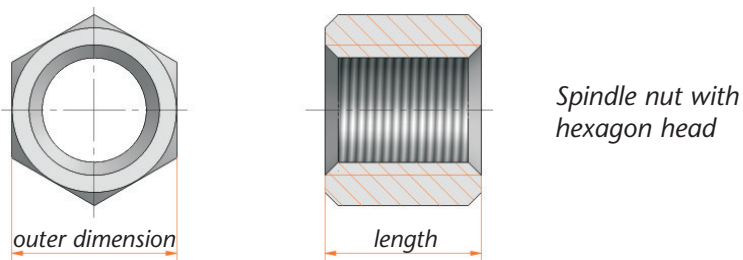
Order-No.	Thread	Version	Outside diameter Ø in mm	Length of the nut in mm	Lateral bore in mm	Material
3012.20-02	Tr12x3RH	right	Ø24	25		Brass
3012.20-04	Tr12x3RH	right	Ø24	25	M6	Brass
3013.20-01	Tr12x3LH	left	Ø24	25		Brass
3013.20-03	Tr12x3LH	left	Ø24	25	M6	Brass
3024.20-01	Tr12x3LH	left	Ø24	35		Brass
3024.20-02	Tr12x3RH	right	Ø24	35		Brass
4804.20-02	Tr12x3RH	right	Ø24	50		Brass
3010.20-02	Tr12x6P3	right	Ø20	25	M6	Brass
1034.20-02	Tr12x6P3	right	Ø24	50		Brass
3042.20-02	Tr12x12P4	right	Ø20	16		PETP
3042.20-04	Tr12x12P4	right	Ø20	25		PETP
3070.20-02	Tr12x12P4	right	Ø30	60		PETP
4833.20-02	Tr16x4	right	Ø30	30,5		Brass



some spindle nuts
have a lateral
socket

(parallel) Metric ISO - trapezoid threads

Order-No.	Thread	Version	Outside diameter Ø in mm	Length of the nut in mm	Socket Ø in mm	Material
1070.20-02	Tr10x2RH	right	Ø16	10		Brass
12500.00-02	Tr10x3RH	right	Ø20	20		Brass
12502.00-01	Tr12x3RH	right	Ø26	24		Steel
12502.00-02	Tr12x3RH	right	Ø26	24		Brass
12503.00-01	Tr12x3LH	left	Ø26	24		Steel
12503.00-02	Tr12x3LH	left	Ø26	24		Brass



Spindle nut with
hexagon head

(parallel) Metric ISO - trapezoid threads

Order-No.	Thread	Version	outer dimension	Length of the nut in mm	Material
12000.00-02	Tr12x3RH	right	hex 19mm	18	Brass
12001.00-01	Tr12x3LH	left	hex 19mm	18	Steel
12001.00-02	Tr12x3LH	left	hex 19mm	18	Brass