

Deflection gear 3039

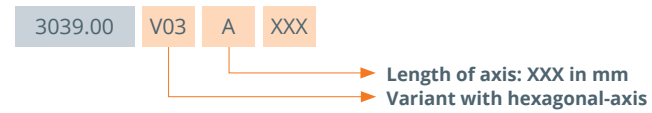
Description

Bevel gearbox for the deflection of a rotary movement at an angle of 90°
 The gearbox can be supplied both with a hexagonal axle with a specific length or without an axle.
 Simple mounting is made possible by a flexible screw fixing.

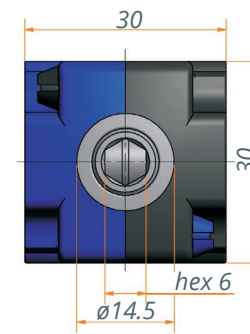
Special features

- Maintenance-free
- Case-hardened steel bevel wheels
- Synthetic gear housing
- Ratio 1:1
- Suitable for both manual and electric motor drives

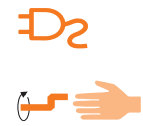
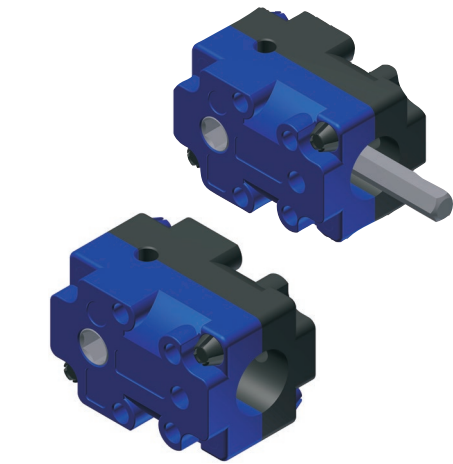
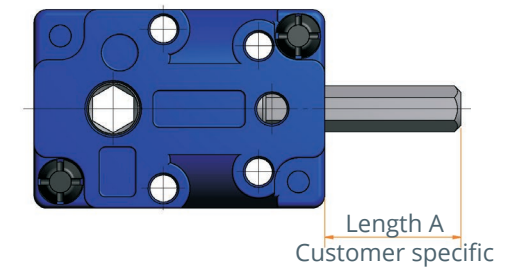
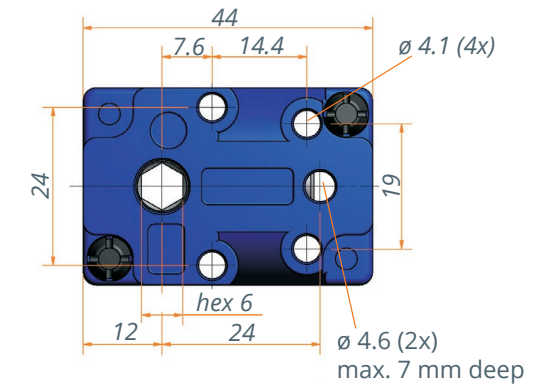
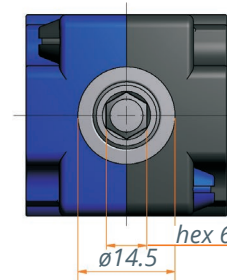
Variant key



3039.00-0001



3039.00-V03AXXX



Technical data

Model	3039.00-0002	3039.00-V03AXXX
Ratio	1:1	1:1
Input/Output	hex 6 mm	hex 6 mm
Number of bevel wheels	2	2
Max. drive torque	4 Nm	4 Nm
Length A	-	Customer specific
Housing	Synthetic	Synthetic