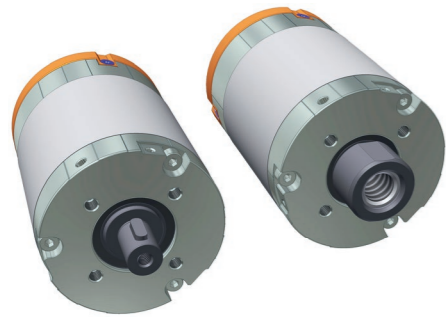


# t-Rex-I-65-86 3206



## Description

14-pol BLDC engine with high-performance neodymium magnets, also equipped with two analog hall sensors to detect the rotor position. The electrical connections are designed as a plug-in system, while additional power electronics are required to operate the motor. The motor axis is alternatively designed as a hollow shaft or as a normal motor shaft. Type 0002 is equipped with a Tr14x3 RH nut, which allows a spindle to be guided linearly through the motor.

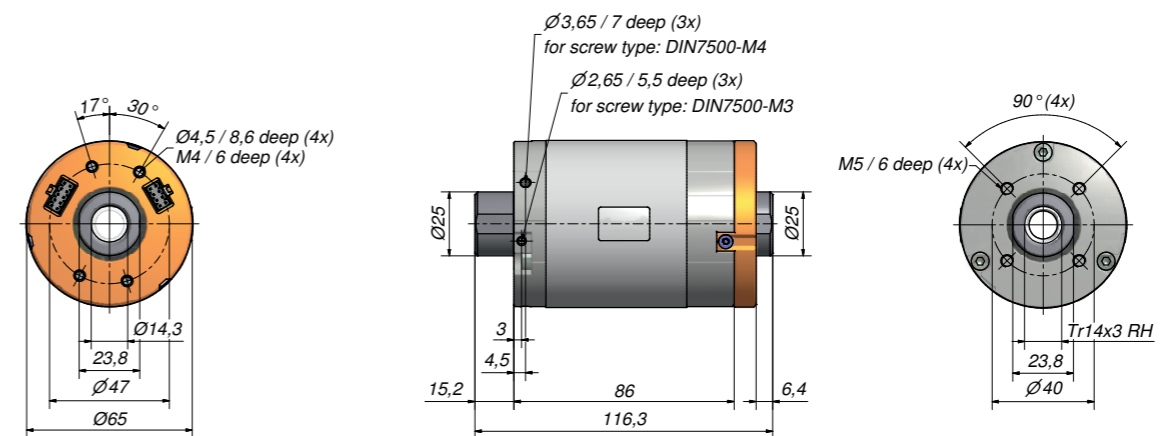
## Special features

- Designed for high torque
- Excellent overload resistance
- Optimal as a direct-drive system or a generator for gearless applications
- On request, can be manufactured with other windings
- A precise design and production of the engine at a given operating point is also possible

## Technical data

Model	3206.00-0001	3206.00-0002
<b>Voltage range</b>	12 V to 48 V	12 V to 48 V
<b>Rated voltage</b>	36 V	36 V
<b>Rated current</b>	4.5 A	4.5 A
<b>Rated torque</b>	1.5 Nm	1.5 Nm
<b>Rated speed</b>	900 rpm	900 rpm
<b>Rated power (output)</b>	140 W	140 W
<b>Max. efficiency</b>	89%	89 %
<b>Idle speed</b>	1,050 rpm	1.050 rpm
<b>Starting torque</b>	6.2 Nm	6.2 Nm
<b>Spindle nut</b>	Tr14x3 RH	-
<b>Infeed of the nominal point</b>	45 mm/s	-
<b>Feed force</b>	1,000 N	-

3206.00-0001 with spindle nut



3206.00-0002 with shaft

