

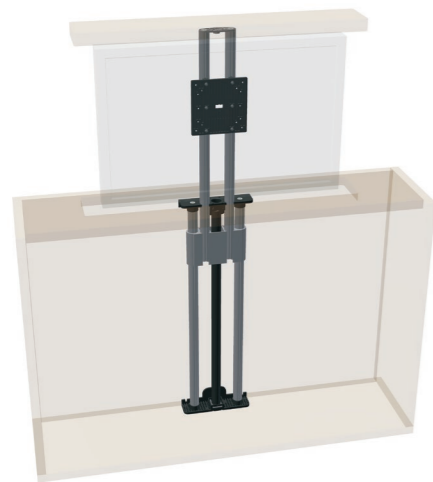
Monitor / TV-Lift Ket-Spring Lift S 4701

Description

Compact lifting system for flat screens. Lifted by a gas spring without motor drive.

Special features

- Smooth stop of the unit through a damped gas spring
- Very small unit, suitable for tight spaces
- Customer specific lengths and lifting forces can be realized with a minimum order quantity of 100 pieces



Technical data

Ket-Screen Lift Small	S 426	S 479	Customized design from 100 pcs. upwards
Stroke	426 mm	479 mm	Customer specification
Min. retracted length	564 mm	617 mm	Stroke +138 mm
Max. load for vertical installation	45 N	80 N	Customer specification
Recommended max. screen size	24"	24"	24"
Item number	4701.00-2000	4701.00-2001	4701.00-2XXX

S 426

S 479

Mounting plate according to VESA standard

